

STANDARD RANGE



SVS103M 3" TFT LCD Digital Monitor

- 3" TFT LCD Digital Monitor
- Operating Voltage: DC11~32V
- Resolution: 320(h) x 240(v)
- 2 camera inputs
- 1 AV output
- Audio enabled
- Suction cup mount ▼



SVS107M 7" TFT LCD Mirror Monitor

- 7" TFT LCD Digital Mirror Monitor
- Operating Voltage: DC11~32V
- Resolution: 1440(h) x 234(v)
- Accepts up to 2 cameras
- Clips directly to vehicle rear view mirror



SVS107MQ 7" TFT LCD Quad Camera Digital Monitor

- 7" TFT LCD Digital Monitor
- Operating Voltage: DC11~32V
- Resolution: 2400(h) x 480(v)
- Accepts up to 4 cameras
- 1 AV output
- Audio enabled
- Dash or roof mounting bracket ▼

SVS105M 5" TFT LCD Digital Monitor

- 5" TFT LCD Digital Monitor
- Operating Voltage: DC11~32V
- Resolution: 640(h) x 480(v)
- 2 camera inputs and 1 AV input
- Audio enabled
- Dash or roof mounting bracket ▼



SVS107MS 7" TFT LCD Digital Monitor

- 7" TFT LCD Digital Monitor
- Operating Voltage: DC11~32V
- Resolution: 800(h) x 480(v)
- 2 camera inputs
- 1 AV output
- Audio enabled
- Dash or roof mounting bracket ▼



Example of Quad View using the SVS107MQ Monitor



SVS100RC Key Hole Mount Camera

- Wide viewing angle
- Key Hole Mount
- 9 infra-red LEDs
- IP66 Waterproof



SVS100SCM (Black) & SVS100SCWM (White) Camera

- Metal housing
- Wide viewing angle
- 8 infra-red LEDs
- IP66 Waterproof



SVS100SCA Camera

- Metal housing
- 6 infra-red LEDs
- 10G shockproof
- 130° viewing angle
- Built-in microphone
- IP68 Waterproof

SVS100SCMI Micro Square Camera

- 135° viewing angle
- IP66 Waterproof



SVS100SCW Camera

- Metal Housing
- 130° viewing angle
- 6 infra-red LEDs
- IP68 Waterproof



SVS100SL (Black) & SVS100SLW (White) Stop Light Camera

- Wide viewing angle
- 8 infra-red LEDs
- ADR Approved (High level stop light)
- IP66 Waterproof



ACCESSORIES

See the full range of accessories at svsaustralia.com



SVS1T.K Trailer Plug Kit

(suits standard range only)

SVSB1HD & SVSB2HD Heavy duty mounting brackets

(suits premium & standard range)



SVSB1HD



SVSB2HD



SVSB3

SVSB3 Suction cup mounting bracket

(suits slide-mount monitors)

▼ bracket upgrades available



SVS2CBS & SVS2CBT Shutter & tilt camera control box

(suits premium range only)

SVS2T.SHD - SVS2T.FHD - SVS2T.MHD Curly cord cable system

(suits premium range only)

SVS2T.SHD Heavy Duty Curly cord

SVS2T.MHD Heavy Duty Socket (Male)

- waterproof screw plug
- potted socket

SVS2T.FHD Heavy Duty Sockets (Female)

- waterproof screw plug
- potted socket



SVS Australia. About us...

SVS Australia is wholly Australian owned and operated. SVS is a specialist supplier of vehicle vision systems that are designed to improve both safety and vehicle operations through a comprehensive range of quality vision products. Our product range has been designed to offer complete vision solutions for all vehicle types ranging from recreational through to heavy duty industrial and commercial applications and allows the user to create custom vision solutions. Our focus is on offering an industry leading product range that increases productivity and protects both lives and equipment from preventable accidents.

At SVS we believe there should be no compromise on quality and performance when fitting a vision system to your vehicle which is why we offer an industry leading warranty on all of our products and offer full technical support to assist in the designing and fitment of all of our systems.

Head Office - Brisbane
5/3 Deakin St
Brendale
QLD 4500
P: (07) 3205 2047
E: sales@svsaustralia.com

Sales Office - Melbourne
63 Link Drive
Campbellfield
VIC 3061
P: 1300 147 455
E: sales@svsaustralia.com



Safety Through Vision



1300 147 455
svsaustralia.com



- SVS203M Heavy Duty Single Camera Monitor**
- 3.5" TFT LCD Digital Monitor
 - Operating Voltage: DC10~32V
 - Resolution: 960(h) x 234(v)
 - 1 camera input
 - Audio enabled
 - Heavy duty suction cup mount ▼



- SVS207M 7" Heavy Duty Quad Camera Monitor**
- 7" High Resolution TFT LCD Digital Monitor
 - Operating Voltage: DC10~32V
 - 4 camera inputs, 1 AV input
 - 1 AV output
 - Audio enabled
 - Heavy duty mounting bracket ▼
 - Automatic picture display (5 trigger functions)

- Vibration: 5.5G
- Max. shock force: 100G



- SVS207MWQ 7" IP68 Heavy Duty Quad Camera Monitor**
- 7" Digital TFT LCD wide panel monitor
 - Operating Voltage: DC10~32V
 - Resolution: 800(h) x 480(v)
 - 4 camera inputs, 1 AV input

- 1 AV output
- Audio enabled
- Heavy duty mounting bracket ▼
- Water resistant (IP68)



Example of Quad View using the SVS207MWQ Monitor

- SVS205M 5" Heavy Duty Dual Camera Monitor**
- 5" TFT LCD Digital Monitor
 - Operating Voltage: DC10~32V
 - Resolution: 960(h) x 234(v)
 - 2 camera inputs
 - Audio enabled
 - Heavy duty mounting bracket ▼
 - Automatic picture display (2 trigger functions)



- SVS207MW 7" IP68 Heavy Duty Dual Camera Monitor**
- 7" Digital TFT LCD wide panel monitor
 - Operating Voltage: DC10~32V
 - Resolution: 800(h) x 480(v)
 - 2 camera inputs
 - Audio enabled
 - Heavy duty mounting bracket ▼
 - Water resistant (IP68)



- SVS200SCM Heavy Duty Mini Camera**
- 1/4" CCD image sensor
 - 150° Diagonal viewing angle
 - Min. illumination: 0.5 Lux
 - DC 9v-14V (via monitor only)
 - Water resistant (IP68)



- SVS200SC Heavy Duty Wide View Camera with Infra-Red LED's**
- 130° Diagonal viewing angle
 - Min. illumination: 0 Lux w/IR LED
 - 11 infra-red LEDs
 - 1/3" CCD image sensor
 - Built-in microphone
 - DC 9v-14V (via monitor only)
 - Submersible up to 3m (IP69K)



- SVS200CTMS Twin Camera with Motorised Shutter**
- 150° Diagonal viewing angle (cam1)
 - Ultra performance in low light
 - 1/3" CCD Sony image device
 - Automatic shutter
 - Built-in microphone
 - DC 9v-14V (via monitor only)
 - Submersible up to 3m (IP69K)



- SVS200CT Twin Wide View Camera**
- 150° Diagonal viewing angle (cam1)
 - Ultra performance in low light
 - 1/3" CCD Sony image device
 - Built-in microphone
 - DC 9v-14V (via monitor only)
 - Submersible up to 3m (IP69K)

Vibration: 15G
Impact: 100G



- SVS200HDC IP69 Heavy Duty Quad Camera with Infra-Red LED's**
- 130° Diagonal viewing angle
 - 1/4" CCD image sensor
 - Nitrogen filled
 - Ultra performance in low light
 - Built-in microphone
 - DC 9v-14V (via monitor only)
 - Water submersible up to 3m (IP69K)

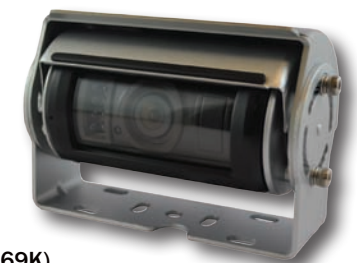
- SVS200RC Heavy Duty Key Hole Mount Camera**
- 150° Diagonal viewing angle
 - 1/3" CCD image sensor
 - Min. illumination: 0.5 Lux
 - DC 9v-14V (via monitor only)
 - Water submersible up to 3m (IP69K)



- SVS200XC Wide View Camera with Infra-Red LED's**
- 150° Diagonal viewing angle
 - 1/4" CCD image sensor
 - Min. illumination: 0 Lux w/IR LED
 - Ultra performance in low light
 - Built-in microphone
 - DC 9v-14V (via monitor only)
 - Submersible up to 3m (IP69K)



- SVS200CMS Wide View Camera with Shutter**
- 150° Diagonal viewing angle (cam1)
 - Ultra performance in low light
 - 1/3" CCD Sony image device
 - Automatic shutter
 - DC 9v-14V (via monitor only)
 - Water submersible up to 3m (IP69K)



- SVS200TCM Motorised Tilt Camera**
- 92° Diagonal viewing angle
 - Ultra performance in low light
 - 1/3" CCD image device
 - Built-in microphone
 - DC 9v-14V (via monitor only)
 - Submersible up to 3m (IP69K)



- SVSDVR3 High Quality Mobile DVR**
- High Quality Premium DVR Series
 - New Technology with Real H.264 Codec Solution
 - Maximum D1 size resolution recording
 - 9V - 35V power input
 - Lockable storage cover for additional security

- Built-in G sensor and optional GPS
- 4 channels audio input and 1 of relay output
- 4 channels sensor input
- CF Card storage, so impacts and vibrations from the operating environment are no longer an issue.



- SVS-SDS Motion Activated Detection System**
- SDS is a motion activated detection system that uses reflected radio waves to detect a moving target. When a target is detected within the specified danger zones in the front, side and rear of the vehicle, an alarm sounds to alert the driver, and corresponding LED's on the display panel indicate the target's location by zone.
- Latest microwave radar technology
 - Operates in all weather conditions
 - Operating Voltage: 9-16V DC
 - Can connect up to 10 sensors
 - Detection Range: 0 to 12 feet

Specialised viewer of mobile DVR system

For security purposes, the SVSDVR3 has a unique file format system, so the recorded data can only be viewed by SVSDVR viewer software installed on the user's PC. The viewer also has full functionality and tracking capabilities through overlays on Google Earth® & maps.



WARRANTY



DOMESTIC USE



COMMERCIAL USE
Premium Range only

* CONDITIONS APPLY
Visit svsaustralia.com for full warranty conditions