

Premium Range Camera Options



SVS200SC H/duty wide view camera with infra-red LED's

- 130° Diagonal viewing angle
- Normal/Mirror image switching
- 270,000 pixels
- Min illumination: 0 Lux w/IR LED
- 11 infra-red LED's
- 1/3" CCD image sensor
- IP69K
- Built-in microphone
- DC 9v-14V (via monitor only)
- Die-cast housing, m/bracket and glare shield
- Operating temp: -30°C to 80°C
- Dimensions: 69(W)x41(H)x52(D)mm
- Weight: 460g



SVS200MC Heavy duty mini camera

- 150° Diagonal viewing angle
- 270,000 pixels
- 1/4" CCD image sensor
- Min illumination: 0.5 Lux
- IP68
- DC 9v-14V (via monitor only)
- Operating temp: -30°C to 80°C
- Dimensions: 33(W)x25(H)x41(D)mm
- Weight: 85g



SVS200RC Heavy duty key hole mount camera

- 150° Diagonal viewing angle
- 270,000 pixels
- 1/3" CCD image sensor
- Min illumination: 0.5 Lux
- IP69K
- DC 9v-14V (via monitor only)
- Operating temp: -30°C to 80°C
- Dimensions: 30(W)x60(D)mm
- Weight: 65g



SVS200XC Wide view camera with infra-red LED's

- 150° Diagonal viewing angle
- Normal/Mirror image switching
- 270,000 pixels
- 1/4" CCD image sensor
- Min illumination: 0 Lux w/IR LED
- Automatic heating
- IP69K
- Ultra performance in low light
- Built-in microphone
- DC 9v-14V (via monitor only)
- Operating temp: -30°C to 80°C
- Dimensions: 90(W)x43(H)x49(D)mm
- Weight: 210g



SVS200HDC IP69 Heavy duty camera with infra-red LED's

- Ultra heavy duty
- 130° Diagonal viewing angle
- Normal/Mirror image switching
- 15G Vibration
- 100G Impact
- 270,000 pixels
- 1/4" CCD image sensor
- Automatic heating
- IP69K
- Nitrogen filled
- 1/4" CCD image sensor
- Ultra performance in low light
- Min illumination: 0 Lux w/IR LED
- Built-in microphone
- DC 9v-14V (via monitor only)
- Operating temp: -40°C to 80°C
- Dimensions: 120(W)x76(H)x70(D)mm
- Weight: 1.8kg



Premium Range Camera Options (Shutter/Tilt/Twin Cameras)

The SVS shutter, tilt and twin cameras are design to work with specific monitors. Please check the compatible monitors under the image to ensure the camera can be used with your monitor. Some cameras may be able to be connected via external control boxes if they are not listed below the image, please contact us on 1300 883 263 if you have any questions regarding this matter.



**SVS200TC
Twin wide view camera**

- 150° Diagonal viewing angle (cam1)
- Normal/Mirror image switching
- Ultra performance in low light
- Min illumination: 0 Lux w/IR LED
- 1/3" CCD Sony image device
- Automatic heating
- IP69K
- 270,000 pixels
- Built-in microphone
- DC 9v-14V (via monitor only)
- Operating temp: -30°C to 80°C
- Dimensions: 118(W)x57(H)x59(D)mm
- Weight: 560g

Suits Monitor: SVS205M/SVS207M/SVS207MW/SVS207MWQ



**SVS207MTS
Twin camera with motorised shutter**

- 150° Diagonal viewing angle (cam1)
- Normal/Mirror image switching
- Min illumination: 0 Lux w/IR LED
- Ultra performance in low light
- 1/3" CCD Sony image device
- Automatic shutter
- Automatic heating
- Automatic lens cleaning
- 270,000 pixels
- Built-in microphone
- DC 9v-14V (via monitor only)
- Operating temp: -30°C to 80°C
- Dimensions: 118(W)x57(H)x59(D)mm
- Weight: 560g
- IP69K

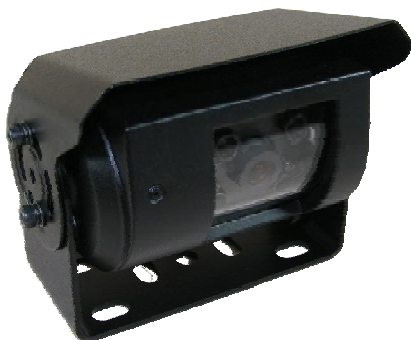
Suits Monitor: SVS207M/SVS207MW/SVS207MWQ



**SVS207MSC
Wide view camera with shutter**

- 150° Diagonal viewing angle (cam1)
- Normal/Mirror image switching
- Ultra performance in low light
- Min illumination: 0 Lux w/IR LED
- 1/3" CCD Sony image device
- Automatic lens cleaning
- Automatic shutter
- Automatic heating
- IP69K
- 270,000 pixels
- Built-in microphone
- DC 9v-14V (via monitor only)
- Operating temp: -30°C to 80°C
- Dimensions: 104(W)x57(H)x55(D)mm
- Weight: 480g

Suits Monitor: SVS207M/SVS207MW/SVS207MWQ



**SVS207TC
Motorised tilt camera**

- 92° Diagonal viewing angle
- Ultra performance in low light
- Min illumination: 0 Lux w/IR LED
- 1/3" CCD image device
- Built-in microphone
- IP69K
- 270,000 pixels
- DC 9v-14V (via monitor only)
- Operating temp: -30°C to 80°C
- Dimensions: 104(W)x57(H)x55(D)mm
- Weight: 500g

Suits Monitor: SVS207M/SVS207MW/SVS207MWQ

